



Believe ♦ Behave ♦ Become

### Calendar Dates

Daylight Savings Time Ends	11/4
ASB Presidents Meeting	11/8
Veteran's Day Holiday	11/11
Principals' Meeting	11/15
Foundations Training	11/16-11/17
Thanksgiving Recess	11/20 - 11/24
Assistant Principals Meeting	11/29
Crisis Team Training for Schools	11/30 or 12/6
Safe Passages	12/7

### What's Due

Weekly Secondary Search Logs for Week Ending 10/27/2017 due	10/30
Water Flushing Certification	11/2
Admin Certification Due	11/3

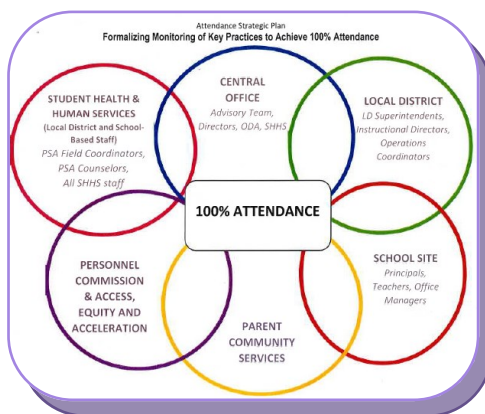
# Friday Operation's Brief

## Attendance, Attendance, Attendance!

With just over 50 days into the school year, we thank you for making student attendance a priority. School leaders across Local District Central are making concerted efforts to increase the percentage of students attending at or above the 96% and reduce chronic absenteeism. This year our target goals are **75%** or more students at the 96%ile rate and **9%** or less for students at the chronic absentee rate.

School leaders are encouraged to access real time attendance data via the MiSiS Ad Hoc Dashboard at [misis.adhoc.lausd.net](http://misis.adhoc.lausd.net). The following intervention strategies may be employed for identified students with 3 or more absences:

- Blackboard Connect focusing on holiday vacation alerts, upcoming flu season.
- Personal phone calls home.
- Attendance newsletter/flyer home (Attachment 1).



*"Attendance is everyone's responsibility."*  
-Dr. Michelle King, Superintendent

## Daylight Savings Time Change

On **November 4, 2017**, Daylight Savings Time ends. Set your clocks back one hour. Also, remember to test and change the batteries on your smoke and carbon monoxide detectors.

Please spread the word, use the extra hour gained to review your home safety plans and remind your families to do the same. An unknown author said, "Safety doesn't happen by accident."



## Veteran's Day



Wishing all Veterans a well deserved holiday. November 11th is Veterans Day. It is an official United States federal holiday which honors people who have served in the armed forces.

In an effort to continue meeting the educational needs of our students, we are requesting your assistance in ensuring staffing needs are met for the upcoming Veterans Day Holiday. Due to the possibility of an increased number of substitute requests for the Thursday before and the Monday following Veterans Day weekend, please be sure to make requests for substitute teachers in advance.

Under the Collective Bargaining Agreement, individuals who are absent before or after a holiday can be asked to provide documentation that supports their reason for absence.

# Friday Operation's Brief

Page 2



## Engaging our students, families, and staff

Attendance is perhaps the single most significant contributor to student achievement. On October 30, 2017, Local District Central Pupil Service and Attendance (PSA) Counselors developed various events to celebrate the 50<sup>th</sup> day of school and engage students, families, and staff in fun activities that promote the importance of attendance.

At Burbank Middle School, PSA Counselor Nicole Kasukabe-Lee created a 'Nightmare before Christmas' Halloween themed banner to recognize students with excellent and proficient attendance. This means that students have no more than two absences. The banner was displayed in the main hall for all students, parents, and staff to view to reinforce attendance expectations.



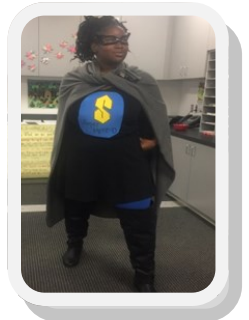
At West Adams Preparatory High School, PSA Counselor Sandra Lopez, Attendance Improvement Counselor Alva Caldera, A-G Counselor Julia Withee, and Principal Erica Nava cheered students as they arrived at school on time. The first 100 students received a ticket for free popcorn during lunch.

At RFK: Los Angeles High School of the Arts, PSA Counselor Florence Lowe, dressed up as a Super Hero to educate students and parents on chronic truancy and excessive tardies. This event raises awareness on the importance of coming to school every day and on time to minimize unnecessary absences.



Attendance is everyone's responsibility. At LaMotte Elementary Principal Doramanda Higuchi organized a Nightmare before Christmas' Halloween themed red carpet event. This event was a success. Parents, staff, and administrators cheered students as they entered the school through the main gate and walked down a red carpet. This event

promotes a welcoming environment and motivates students to come to school every day and on time.



To Review the September Attendance Data, please see Attachment 2.

## Specialized support services for credit recovery programs students

Central HS/ Tri C CDS are two different schools under one administration. Central HS is a Continuation School where students ages 16-22 are working towards credit recovery. The Tri C CDS is the Community Day School where students are usually between ages 14-16 and may have been placed due to expulsion, behavioral problems, and also for credit recovery. The schools have a total of 32 classrooms at 28 different community locations throughout all LA Unified. Among these locations, there are three sites for students on probation and SDC classrooms.

Although covering 28 schools, PSW Talia Guppy has been able to successfully offer services to the whole Central HS/ Tri C CDS community of parents and students for three years in a row. Ms. Guppy has provided monthly parent workshops on mental health awareness, substance abuse, trauma and A-G requirements. During the Fall semester, Ms. Guppy, plans a College & Career Resource Fair and in the Spring, she holds a Community Resource Fair. In addition, two FAFSA workshops for students will be held during the Fall and Spring semesters.

Additional services provided by PSW Guppy are:

- ◆ Coordinating weekly substance abuse treatment at the probation sites
- ◆ Providing Restorative Justice along with her 3 interns at 17 of the 28 locations
- ◆ Conducting Student/Classroom training on the evidence-based practice More Than Sad that addresses suicidal behavior and depression
- ◆ Leading SSPT Coordination including the reclassifying of EL students and insuring student are provided with appropriate services

On behalf of Central HS/Tri C, Ms. Guppy applied for the Gilderman Institute Hamilton program and was chosen to have her school attend the Hamilton musical on November 2, 2017!



Central HS/Tri-C College & Career Resource Fair in September 2017

## Restorative Justice: Circle Dialog Process



The circle is a dialog process that works intentionally to create a safe space to discuss very difficult or painful issues in order to improve relationships and resolve differences. The intent of the circle is to find resolutions that serve every member of the circle. The process is based on an assumption of equal worth and dignity for all participants and therefore provides equal voice to all participants. Every participant has gifts to offer in finding a good solution to the problem.

## Human Resources Update

Please welcome Carol Shimizu, Personnel Specialist as the newest member of the Local District Central Human Resources (HR) Team! She previously worked with HR-Support Services, HR-Itinerant Services, and HR-Special Education.

We want to thank everyone for all your support, patience and understanding during this transition period. Please refer to Attachment 3 for LD Central Personnel Specialist assignments for the 2017-18 School Year.

# Friday Operation's Brief

Page 4



## Schools Telephone Auto-Attendant

In an effort to provide personalized customer service, all secondary schools can call the ITD hot line at 213-241-5200 to open a ticket to have the school's telephone auto attendant removed.

## Amended California Education Code Section 47614

*"The intent of the people in amending Section 47614 is that public school facilities should be shared fairly among all public school pupils, including those in charter schools."*

## Local District Central Crisis Team Trainings

Per BUL-5800.0, *Crisis Preparedness, Response and Recovery Bulletin*, "each school site under the direction of the Principal or designee shall establish a Crisis Team." Local District Central will provide informative and interactive training on building the capacity of the school site crisis team. Due to limited space, the trainings will be held at several locations. Each school's participation in this training is vital.

All EEC's and Primary Centers	November 28, 2017	Riordan PC
Elementary and Secondary Schools	November 30, 2017	Belmont HS
Elementary and Secondary Schools	December 6, 2017	Los Angeles Academy

An invitation to all LD Central principals and SAAs will be sent via school mail and email next week with your assigned time and location. Principals may designate three School Site Crisis Team Members listed in their Safe School Plan Volume 3 to attend. It is suggested that the training attendees include a site administrator, a Student Health and Human Services staff member (Nurse, PSW, PSA Counselor) and other support services personnel (School Psychologist, Dean, Academic Counselor, etc.). Please return form by 5:00 pm on **November 10, 2017**.

Thank you for your commitment to promoting a safe and positive learning environment for all. If you have any questions, please contact Ricardo Lopez at [ricardo.l.lopez@lausd.net](mailto:ricardo.l.lopez@lausd.net) or Veronica Real at [veronica.real@lausd.net](mailto:veronica.real@lausd.net).

## Prop 39 Charter School Co-Locations

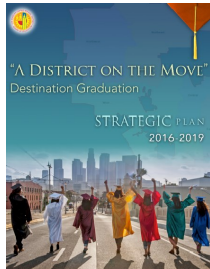
Prior to Proposition 39, school districts were only required to provide charter schools with surplus space (i.e., facilities not being used by the school district for instructional or administrative purposes).

In November 2000, California voters approved Proposition 39, which amended California Code 47614. School districts must now provide "reasonably equivalent" facilities to accommodate all of the charter school's students who would otherwise attend district schools.

November 1	Charter Schools submit written requests for facilities including projected Average Daily Attendance ("ADA")
December 1	District reviews Charters' ADA projections and agrees, or objects and responds with projections the District considers reasonable.
January 2	Charter Schools respond to District's ADA projections.
February 1	District makes preliminary proposals to Charter Schools with eligible facilities requests.
March 1	Charter Schools respond to preliminary proposals.
April 1	District makes final offers to Charter Schools.
May 1	Charter School must notify the District in writing to accept or decline the final offer by May 1 or 30 days from its receipt of final offer.
10 Days	If final offers are accepted, Charter Schools occupy sites 10 working days prior to their first day of school instruction.

# Friday Operation's Brief

Page 5



## School

### Experience

### Survey 2017

Schools with high response rates shared the following sample of best practices:

- \* Announce the Parent Survey at staff and parent meetings (e.g., ELAC), and write announcements in parent newsletters, bulletins, and on the school webpage.
- \* Send a ConnectEd message on the day the surveys are sent home encouraging them to complete the survey
- \* Have your parent center and/or computer lab open for parents who wish to take the survey online during parent conferences

## Bullying, Prevention and Intervention

This week Local District Central held its annual Bullying, Prevention, Intervention Policy/Law, Reporting Training. "The District takes a strong position against bullying, hazing, and any behavior that infringes on the safety of the well-being of students". We encourage all participants to share their learning with their colleagues during a faculty/staff meeting. Please reach out to Kim Valdez in the Office of Student Health and Human Services for assistance and resources available to you.



## Campus Aides

We at Local District Central want to be able to support you in ensuring that all of your campus aide vacancies are filled in a timely manner. Early in the year we asked all SAA's for detailed Campus Aide hours. If at any time you create a vacancy for any reason, please email Beatriz Campos at [bxc2865@lausd.net](mailto:bxc2865@lausd.net) and copy Tony Cortez at [tony.cortez@lausd.net](mailto:tony.cortez@lausd.net). Please remember that we always recommend having a campus aide 30 minutes before and 30 minutes after school.



Local District Central is

**#1**

with 97% of Kindergarten  
Immunization compliance!





<<INSERT SCHOOL NAME>>

# ATTENTION

## Parents & Students



Student Health &  
Human Services

**Please join us in reaching our goal of 96% attendance!**

*This means that students must have:*

- No more than one absence for every five weeks (25 instructional days) of school.
- No more than SEVEN TOTAL absences in the entire school year.

Attending school regularly helps children feel better about school and themselves. Creating a habit of good attendance is important. Good attendance will help children do well later in high school, college, and work.



*I Rise.*  
*I Attend.*  
*I Matter.*



**Attendance Campaign**

- Be sure to come to school every day
- Be in the gate by <<0:00>>am
- Stay healthy by washing your hands, going to bed on time and eating nutritious meals
- If your child has a doctor or dentist appointment, please bring him/her to school before or after the appointment

<<INSERT SCHOOL NAME>>



# Atención Padres y Estudiantes



Student Health &  
Human Services

**¡Únete a nosotros para alcanzar nuestra meta de asistencia del 96%!**

Esto significa que los estudiantes deben:

- No tener más de un día de ausencia por cada 5 semanas de clase (cada 25 días)
- No tener más de un TOTAL de SIETE ausencias en todo el año escolar.

Asistir a la escuela regularmente ayuda a los niños a tener mejor autoestima y a sentirse mejor en la escuela. Crear un hábito de buena asistencia es importante. Los buenos hábitos de asistencia les ayudará a tener éxito en la preparatoria, la universidad y en el trabajo.



*I Rise.  
I Attend.  
I Matter.*



**Attendance Campaign**

- Asistir a la escuela todos los días
- Llegar al portón de la escuela a las <<0:00>>am
- Mantenerse saludable lavándose las manos, yendo a la cama a tiempo y comiendo comidas nutritivas
- Si su hijo/a tiene una cita con el médico o el dentista, por favor asegúrese que la cita sea antes ó después de la escuela

Student Attendance Submittal Rates and LCAP Attendance Metrics

Cumulative Att Submittal Rate (goal=100%)	YTD % of Students at/above 96% (goal=>75%)	YTD % of Students at/below 91% (goal=<9%)	Loc Code	School	School Type
100.0000%	89.4%	6.1%	2307	LEE EL MED HLTH MAG	ELEMENTARY SCHOOL
100.0000%	88.9%	4.7%	2943	JONES EL	ELEMENTARY SCHOOL
100.0000%	87.5%	6.9%	2383	ESPERANZA EL	ELEMENTARY SCHOOL
99.9672%	87.0%	7.0%	2699	CAHUENGA EL	ELEMENTARY SCHOOL
99.9761%	85.0%	8.2%	2863	CASTELAR ST EL	ELEMENTARY SCHOOL
100.0000%	84.1%	7.6%	2386	DEL OLMO EL	ELEMENTARY SCHOOL
100.0000%	84.1%	6.7%	7654	WEST VERNON AVE EL	ELEMENTARY SCHOOL
100.0000%	83.9%	7.4%	5384	MONTE VISTA ST EL	ELEMENTARY SCHOOL
100.0000%	83.9%	8.0%	3986	FRANKLIN AVE EL	ELEMENTARY SCHOOL
99.9795%	83.7%	7.8%	2542	WHITE EL	ELEMENTARY SCHOOL
100.0000%	83.7%	8.6%	4986	LOS FELIZ STEMM MAG	ELEMENTARY SCHOOL
100.0000%	83.6%	8.3%	6507	SAN PEDRO ST EL	ELEMENTARY SCHOOL
99.6750%	83.1%	8.5%	2701	KIM EL	ELEMENTARY SCHOOL
100.0000%	83.0%	8.9%	3397	DELEVAN DRIVE EL	ELEMENTARY SCHOOL
99.7603%	82.5%	8.4%	4548	HOBART BLVD EL	ELEMENTARY SCHOOL
99.9724%	81.6%	8.5%	7178	TOLAND WAY EL	ELEMENTARY SCHOOL
100.0000%	81.5%	8.0%	7082	10TH ST EL	ELEMENTARY SCHOOL
100.0000%	81.5%	9.3%	5111	ALEXANDER SCI CTR SCH	ELEMENTARY SCHOOL
100.0000%	81.4%	8.0%	4589	HOOVER ST EL	ELEMENTARY SCHOOL
99.9159%	81.0%	10.6%	7288	28TH ST EL	ELEMENTARY SCHOOL
100.0000%	80.9%	10.9%	2369	RFK AMBSDR GLBL EDU	ELEMENTARY SCHOOL
100.0000%	80.8%	12.7%	2068	ALLESANDRO EL	ELEMENTARY SCHOOL
100.0000%	80.6%	9.7%	7219	TRINITY ST EL	ELEMENTARY SCHOOL
99.8679%	80.5%	8.7%	2942	ESTRELLA EL	ELEMENTARY SCHOOL
100.0000%	80.5%	9.3%	7301	24TH ST EL	ELEMENTARY SCHOOL
100.0000%	80.3%	7.5%	6329	ROCKDALE VAPA MAG	ELEMENTARY SCHOOL
99.9286%	79.8%	12.5%	7479	VERMONT AVE EL	ELEMENTARY SCHOOL
99.8594%	79.7%	11.3%	4671	IVANHOE EL	ELEMENTARY SCHOOL
99.8558%	79.7%	9.2%	3329	DAHLIA HTS EL	ELEMENTARY SCHOOL
99.9897%	79.5%	10.7%	2233	ATWATER AVE EL	ELEMENTARY SCHOOL
100.0000%	79.5%	9.4%	2384	POLITI EL	ELEMENTARY SCHOOL
99.9809%	79.4%	10.7%	5699	NORWOOD ST EL	ELEMENTARY SCHOOL
100.0000%	79.2%	10.3%	2219	ASCOT AVE EL	ELEMENTARY SCHOOL
99.9596%	79.2%	10.4%	2178	ARAGON AVE EL	ELEMENTARY SCHOOL
99.8936%	79.0%	11.3%	2385	GRATTS LA FOR YS	ELEMENTARY SCHOOL
100.0000%	79.0%	10.3%	6493	SAN PASCUAL EL STEAM	ELEMENTARY SCHOOL
99.8172%	79.0%	12.3%	2944	HUERTA EL	ELEMENTARY SCHOOL
99.2374%	78.7%	13.6%	2544	MACARTHUR PK EL VAPA	ELEMENTARY SCHOOL

Student Attendance Submittal Rates and LCAP Attendance Metrics

Cumulative Att Submittal Rate (goal=100%)	YTD % of Students at/above 96% (goal=>75%)	YTD % of Students at/below 91% (goal=<9%)	Loc Code	School	School Type
99.8283%	78.5%	13.3%	5055	MAGNOLIA AVE EL	ELEMENTARY SCHOOL
100.0000%	78.4%	11.4%	6370	ROSEMONT AVE EL	ELEMENTARY SCHOOL
100.0000%	78.1%	10.6%	3356	DAYTON HEIGHTS EL	ELEMENTARY SCHOOL
100.0000%	78.0%	12.0%	7274	20TH ST EL	ELEMENTARY SCHOOL
99.9255%	77.5%	12.7%	3932	49TH ST EL	ELEMENTARY SCHOOL
100.0000%	77.5%	13.6%	3479	DORRIS PLACE EL	ELEMENTARY SCHOOL
99.7705%	77.4%	9.6%	5288	MICHELTORENA ST EL	ELEMENTARY SCHOOL
99.8774%	76.8%	13.7%	7151	WEEMES EL	ELEMENTARY SCHOOL
99.8820%	76.8%	11.5%	2041	ALEXANDRIA AVE EL	ELEMENTARY SCHOOL
100.0000%	76.3%	12.6%	6534	KING JR EL	ELEMENTARY SCHOOL
99.9159%	76.3%	13.6%	4680	LIZARRAGA EL	ELEMENTARY SCHOOL
100.0000%	76.2%	10.7%	4890	LOCKWOOD AVE EL	ELEMENTARY SCHOOL
100.0000%	75.7%	11.8%	3575	ELYSIAN HEIGHTS EL	ELEMENTARY SCHOOL
100.0000%	75.7%	15.2%	7959	YORKDALE EL	ELEMENTARY SCHOOL
100.0000%	75.7%	13.3%	5068	MAIN ST EL	ELEMENTARY SCHOOL
99.2606%	75.6%	11.0%	5466	NEVIN AVE EL	ELEMENTARY SCHOOL
100.0000%	75.5%	11.5%	4164	GLENFELIZ BLVD EL	ELEMENTARY SCHOOL
100.0000%	75.4%	12.7%	2603	BUCHANAN ST EL	ELEMENTARY SCHOOL
99.2887%	75.3%	13.3%	7356	UNION AVE EL	ELEMENTARY SCHOOL
99.9438%	74.3%	14.3%	3247	PLASENCIA EL	ELEMENTARY SCHOOL
100.0000%	74.2%	11.2%	4685	AURORA EL	ELEMENTARY SCHOOL
100.0000%	74.0%	16.0%	5505	9TH ST EL	ELEMENTARY SCHOOL
99.4633%	74.0%	15.3%	3507	EAGLE ROCK EL	ELEMENTARY SCHOOL
99.7277%	73.9%	16.0%	4982	LOS ANGELES EL	ELEMENTARY SCHOOL
99.9966%	73.7%	12.6%	4575	HOOPER AVE EL	ELEMENTARY SCHOOL
99.5911%	73.3%	13.9%	4082	GARVANZA EL	ELEMENTARY SCHOOL
99.9687%	73.2%	13.6%	2027	ALDAMA EL	ELEMENTARY SCHOOL
100.0000%	73.2%	15.0%	3877	FLETCHER DR EL	ELEMENTARY SCHOOL
100.0000%	73.0%	16.3%	5205	MAYBERRY ST EL	ELEMENTARY SCHOOL
100.0000%	72.8%	18.2%	5113	MACK EL	ELEMENTARY SCHOOL
100.0000%	72.4%	13.4%	4123	GLASSELL PARK EL	ELEMENTARY SCHOOL
98.8802%	71.9%	17.9%	3192	COMMONWLTH AVE EL	ELEMENTARY SCHOOL
100.0000%	71.4%	18.8%	5247	MENLO AVE EL	ELEMENTARY SCHOOL
99.9300%	71.3%	17.4%	2151	ANNANDALE EL	ELEMENTARY SCHOOL
100.0000%	71.2%	18.0%	2671	BUSHNELL WAY EL	ELEMENTARY SCHOOL
100.0000%	70.9%	17.8%	2311	POINDEXTER LAMOTTE EL	ELEMENTARY SCHOOL
100.0000%	70.4%	15.9%	2308	RIDE EL SMART ACAD	ELEMENTARY SCHOOL
98.5667%	70.0%	13.1%	3110	CLIFFORD ST M/T MAG	ELEMENTARY SCHOOL

Student Attendance Submittal Rates and LCAP Attendance Metrics

Cumulative Att Submittal Rate (goal=100%)	YTD % of Students at/above 96% (goal=>75%)	YTD % of Students at/below 91% (goal=<9%)	Loc Code	School	School Type
99.3386%	69.8%	19.3%	4681	HARMONY EL	ELEMENTARY SCHOOL
99.1007%	68.2%	20.1%	7589	WADSWORTH AVE EL	ELEMENTARY SCHOOL
99.6284%	66.5%	20.8%	5630	NORMANDIE AVE EL	ELEMENTARY SCHOOL
98.2283%	63.2%	21.5%	5411	MT WASHINGTON EL	ELEMENTARY SCHOOL
99.4905%	88.2%	6.3%	8208	KING MS MAG FLM/MDIA	MIDDLE SCHOOL
100.0000%	87.0%	6.2%	8064	KIM ACADEMY	MIDDLE SCHOOL
98.6366%	86.2%	8.1%	8058	LIECHTY MS	MIDDLE SCHOOL
99.3254%	85.3%	7.3%	8009	ADAMS MS	MIDDLE SCHOOL
98.5134%	84.4%	8.5%	5173	NAVA LA SCH BUS&TECH	MIDDLE SCHOOL
97.4591%	84.0%	8.1%	8462	VIRGIL MS	MIDDLE SCHOOL
99.3482%	82.8%	8.8%	8062	CLINTON MS	MIDDLE SCHOOL
99.0171%	82.1%	9.9%	8189	IRVING MS MME MAG	MIDDLE SCHOOL
99.9125%	82.0%	8.8%	8057	BERENDO MS	MIDDLE SCHOOL
97.0968%	80.6%	10.7%	8094	CARVER MS	MIDDLE SCHOOL
100.0000%	80.4%	10.7%	8066	BURBANK MS	MIDDLE SCHOOL
99.7985%	80.1%	12.8%	8045	CASTRO MS	MIDDLE SCHOOL
99.0936%	79.2%	10.9%	8200	LOS ANGELES ACAD MS	MIDDLE SCHOOL
98.4395%	79.1%	11.0%	8070	NAVA LA SCH ART&CULT	MIDDLE SCHOOL
98.6224%	77.3%	12.1%	2134	STUDIO SCHOOL	MIDDLE SCHOOL
96.7218%	74.2%	15.2%	6868	OBAMA GLBL PREP ACAD	MIDDLE SCHOOL
100.0000%	79.4%	10.9%	5170	LEXINGTON AVE PC	PRIMARY CENTER
100.0000%	77.5%	12.7%	2392	OLYMPIC PC	PRIMARY CENTER
100.0000%	75.5%	14.1%	5385	RIORDAN PC	PRIMARY CENTER
100.0000%	74.5%	14.2%	2543	LAFAYETTE PARK PC	PRIMARY CENTER
100.0000%	73.5%	18.9%	4983	MARIPOSA-NABI PC	PRIMARY CENTER
100.0000%	72.9%	14.4%	4576	HOOPER AVE PC	PRIMARY CENTER
100.0000%	71.8%	16.2%	2393	LAKE ST PRIMARY	PRIMARY CENTER
99.7246%	71.4%	18.1%	7220	MAPLE PC	PRIMARY CENTER
100.0000%	68.0%	18.0%	5112	JONES PC	PRIMARY CENTER
99.5380%	89.0%	5.0%	8853	ORTHOPAEDIC HSP SH MG	SENIOR HIGH
99.4779%	87.9%	6.3%	8738	DBM	SENIOR HIGH
99.6929%	81.2%	9.8%	8750	MARSHALL SH	SENIOR HIGH
99.8280%	79.1%	11.9%	8516	CORTINES SCH OF VAPA	SENIOR HIGH
98.7190%	78.0%	14.4%	8206	RFK SCH VIS ARTS/HUM	SENIOR HIGH
99.9688%	77.8%	14.7%	8517	CONTRERAS LC BUS TR	SENIOR HIGH
99.0928%	76.1%	12.5%	7707	SOTOMAYOR LA HADA	SENIOR HIGH
98.4608%	75.4%	16.1%	8207	CONTRERAS LC ALC	SENIOR HIGH
100.0000%	74.2%	14.5%	8501	RFK LA SH ARTS	SENIOR HIGH

Student Attendance Submittal Rates and LCAP Attendance Metrics

Cumulative Att Submittal Rate (goal=100%)	YTD % of Students at/above 96% (goal=>75%)	YTD % of Students at/below 91% (goal=<9%)	Loc Code	School	School Type
99.9184%	74.2%	15.0%	8774	CONTRERAS LC GLBL ST	SENIOR HIGH
99.9273%	73.5%	15.7%	7614	NAVA COLLEGE PREP	SENIOR HIGH
98.2622%	73.2%	17.8%	8714	JEFFERSON SH	SENIOR HIGH
100.0000%	72.1%	17.4%	8577	SOTOMAYOR LA LARS	SENIOR HIGH
98.3309%	72.0%	18.4%	8716	SANTEE EC	SENIOR HIGH
99.8776%	70.9%	21.4%	8527	CONTRERAS LC SOC JUS	SENIOR HIGH
99.9798%	69.7%	20.2%	8544	ROYBAL LC	SENIOR HIGH
99.9232%	69.1%	20.7%	7722	ANGELOU COMMUNITY SH	SENIOR HIGH
99.8975%	68.8%	20.3%	8748	WEST ADAMS PREP SH	SENIOR HIGH
98.2713%	64.6%	26.8%	8543	BELMONT SH	SENIOR HIGH
98.9971%	64.1%	25.5%	8743	MANUAL ARTS SH	SENIOR HIGH
98.6247%	47.3%	39.5%	8710	EARLY COLLEGE ACAD	SENIOR HIGH
99.6771%	86.6%	6.7%	8132	FOSHAY LC	SPAN
100.0000%	85.5%	6.3%	4322	ARROYO SECO MUS/S MAG	SPAN
99.8735%	84.7%	7.7%	7780	RFK UCLA COMM SCH	SPAN
98.9217%	84.4%	7.9%	8643	FRANKLIN HS	SPAN
98.9927%	83.1%	8.4%	7137	32ND ST USC PA MAG	SPAN
99.9329%	81.3%	10.5%	7771	RFK AMBSDR GLBL LDSH	SPAN
98.1784%	80.9%	9.7%	7783	RFK NEW OPEN WLD	SPAN
99.1883%	80.0%	11.0%	8614	EAGLE ROCK HS	SPAN
99.7818%	79.3%	11.0%	4904	LOGAN ACADEMY	SPAN
99.2024%	56.4%	26.2%	1914	WIDNEY CPTC	SPED
100.0000%	40.4%	48.1%	1919	LANTERMAN HS	SPED
99.9034%	32.0%	53.4%	1955	SALVIN SP ED CTR	SPED

**LOS ANGELES UNIFIED SCHOOL DISTRICT**  
**HUMAN RESOURCES**  
**CERTIFICATED ASSIGNMENTS AND SUPPORT SERVICES**  
**Lists of Schools/Specialists**

<b>Cost Center</b>	<b>School Name</b>	<b>2017-2018 District (School Information Branch)</b>	<b>Specialist Name</b>	<b>SCA's</b>	<b>Techs</b>	<b>Credentials &amp; Contract Specialist</b>	<b>Immediate Supervisor to Credentials &amp; Contract Specialist</b>
1708201	10TH ST EL	C	WILLIAM MASIS	Marva Puerto	Marlene Cienfuegos	Arthur Villanova	Monica Mora
1727401	20TH ST EL	C (INV)	WILLIAM MASIS	Deserine Estrada	Marlene Cienfuegos	Toni Hodson	Monica Mora
1957001	24TH ST EEC	C	WILLIAM MASIS	Marva Puerto	Marlene Cienfuegos	Arthur Villanova	Monica Mora
1730101	24TH ST EL	C	WILLIAM MASIS	Marva Puerto	Marlene Cienfuegos	Arthur Villanova	Monica Mora
1959501	28TH ST EEC	C	WILLIAM MASIS	Marva Puerto	Marlene Cienfuegos	Arthur Villanova	Monica Mora
1728801	28TH ST EL	C	WILLIAM MASIS	Marva Puerto	Marlene Cienfuegos	Arthur Villanova	Monica Mora
1713701	32ND/USC PER ART MAG	C	WILLIAM MASIS	Marva Puerto	Marlene Cienfuegos	Arthur Villanova	Monica Mora
1959301	37TH ST EEC	C	CAROL SHIMIZU	Marva Puerto	Marlene Cienfuegos	Toni Hodson	Monica Mora
1393201	49TH ST EL	C	WILLIAM MASIS	Marva Puerto	Marlene Cienfuegos	Arthur Villanova	Monica Mora
1550501	9TH ST EL	C	WILLIAM MASIS	Marva Puerto	Marlene Cienfuegos	Arthur Villanova	Monica Mora
1800902	ADAMS G/HA MAG	C	WILLIAM MASIS	Marva Puerto	Marlene Cienfuegos	Arthur Villanova	Monica Mora
1800901	ADAMS MS	C	WILLIAM MASIS	Marva Puerto	Marlene Cienfuegos	Arthur Villanova	Monica Mora
1202701	ALDAMA EL	C	CAROL SHIMIZU	Marva Puerto	Marlene Cienfuegos	Toni Hodson	Monica Mora
1511101	ALEXANDER SCI CTR SC	C	WILLIAM MASIS	Marva Puerto	Marlene Cienfuegos	Arthur Villanova	Monica Mora
1950101	ALEXANDRIA AVE EEC	C	CAROL SHIMIZU	Marva Puerto	Marlene Cienfuegos	Toni Hodson	Monica Mora
1204101	ALEXANDRIA EL	C	CAROL SHIMIZU	Marva Puerto	Marlene Cienfuegos	Toni Hodson	Monica Mora
1206801	ALLESANDRO EL	C	CAROL SHIMIZU	Marva Puerto	Marlene Cienfuegos	Toni Hodson	Monica Mora
1206802	ALLESNDRO COOP LR MG	C	CAROL SHIMIZU	Marva Puerto	Marlene Cienfuegos	Toni Hodson	Monica Mora
1772201	ANGELOU COMM FN ARTS	C	WILLIAM MASIS	Marva Puerto	Marlene Cienfuegos	Arthur Villanova	Monica Mora
1215101	ANNANDALE EL	C	CAROL SHIMIZU	Marva Puerto	Marlene Cienfuegos	Toni Hodson	Monica Mora
1217801	ARAGON EL	C	CAROL SHIMIZU	Marva Puerto	Marlene Cienfuegos	Toni Hodson	Monica Mora
1432201	ARROYO SECO MUSM SCI	C	CAROL SHIMIZU	Marva Puerto	Marlene Cienfuegos	Toni Hodson	Monica Mora
1221901	ASCOT EL	C	WILLIAM MASIS	Marva Puerto	Marlene Cienfuegos	Arthur Villanova	Monica Mora
1223301	ATWATER EL	C	CAROL SHIMIZU	Marva Puerto	Marlene Cienfuegos	Toni Hodson	Monica Mora
1468501	AURORA EL	C	WILLIAM MASIS	Marva Puerto	Marlene Cienfuegos	Arthur Villanova	Monica Mora
1854301	BELMONT SH	C	WILLIAM MASIS	Marva Puerto	Marlene Cienfuegos	Toni Hodson	Monica Mora
1821001	BELMONT SH LA TCH PR	C	WILLIAM MASIS	Marva Puerto	Marlene Cienfuegos	Toni Hodson	Monica Mora
1805701	BERENDO MS	C (INV)	WILLIAM MASIS	Deserine Estrada	Marlene Cienfuegos	Arthur Villanova	Monica Mora
1949601	BILL CRUZ EEC	C	CAROL SHIMIZU	Marva Puerto	Marlene Cienfuegos	Toni Hodson	Monica Mora
1260301	BUCHANAN EL	C	CAROL SHIMIZU	Marva Puerto	Marlene Cienfuegos	Toni Hodson	Monica Mora
1260302	BUCHANAN MTH/SCI MAG	C	CAROL SHIMIZU	Marva Puerto	Marlene Cienfuegos	Toni Hodson	Monica Mora
1806602	BURBANK MATH/SCI MAG	C	CAROL SHIMIZU	Marva Puerto	Marlene Cienfuegos	Toni Hodson	Monica Mora
1806601	BURBANK MS	C	CAROL SHIMIZU	Marva Puerto	Marlene Cienfuegos	Toni Hodson	Monica Mora
1806603	BURBANK POLICE AC MG	C	CAROL SHIMIZU	Marva Puerto	Marlene Cienfuegos	Toni Hodson	Monica Mora
1267101	BUSHNELL WAY EL	C	CAROL SHIMIZU	Marva Puerto	Marlene Cienfuegos	Toni Hodson	Monica Mora
1269901	CAHUENGA EL	C	CAROL SHIMIZU	Marva Puerto	Marlene Cienfuegos	Toni Hodson	Monica Mora
1809401	CARVER MS	C (INV)	WILLIAM MASIS	Deserine Estrada	Marlene Cienfuegos	Toni Hodson	Monica Mora
1286301	CASTELAR EL	C	CAROL SHIMIZU	Marva Puerto	Marlene Cienfuegos	Toni Hodson	Monica Mora
1951001	CASTELAR ST EEC	C	CAROL SHIMIZU	Marva Puerto	Marlene Cienfuegos	Toni Hodson	Monica Mora

**LOS ANGELES UNIFIED SCHOOL DISTRICT**  
**HUMAN RESOURCES**  
**CERTIFICATED ASSIGNMENTS AND SUPPORT SERVICES**  
**Lists of Schools/Specialists**

<b>Cost Center</b>	<b>School Name</b>	<b>2017-2018 District (School Information Branch)</b>	<b>Specialist Name</b>	<b>SCA's</b>	<b>Techs</b>	<b>Credentials &amp; Contract Specialist</b>	<b>Immediate Supervisor to Credentials &amp; Contract Specialist</b>
1804501	CASTRO MS	C	WILLIAM MASIS	Marva Puerto	Marlene Cienfuegos	Arthur Villanova	Monica Mora
1899101	CDS TRI-C	C	CAROL SHIMIZU	Marva Puerto	Marlene Cienfuegos	Toni Hodson	Monica Mora
1858001	CENTRAL HS	C	CAROL SHIMIZU	Marva Puerto	Marlene Cienfuegos	Toni Hodson	Monica Mora
1311001	CLIFFORD EL	C	CAROL SHIMIZU	Marva Puerto	Marlene Cienfuegos	Toni Hodson	Monica Mora
1806201	CLINTON MS	C	WILLIAM MASIS	Marva Puerto	Marlene Cienfuegos	Arthur Villanova	Monica Mora
1319201	COMMONWEALTH EL	C	CAROL SHIMIZU	Marva Puerto	Marlene Cienfuegos	Toni Hodson	Monica Mora
1319202	COMMONWLTH G/HG MAG	C	CAROL SHIMIZU	Marva Puerto	Marlene Cienfuegos	Toni Hodson	Monica Mora
1851701	CONTRERAS BUS TOUR	C	WILLIAM MASIS	Marva Puerto	Marlene Cienfuegos	Arthur Villanova	Monica Mora
1820701	CONTRERAS LC ALC	C	WILLIAM MASIS	Marva Puerto	Marlene Cienfuegos	Arthur Villanova	Monica Mora
1877401	CONTRERAS LC GLBL ST	C	WILLIAM MASIS	Marva Puerto	Marlene Cienfuegos	Arthur Villanova	Monica Mora
1852701	CONTRERAS LC SOC JUS	C	WILLIAM MASIS	Marva Puerto	Marlene Cienfuegos	Arthur Villanova	Monica Mora
1851601	CORTINES SCH OF VPA	C	WILLIAM MASIS	Marva Puerto	Marlene Cienfuegos	Arthur Villanova	Monica Mora
1332901	DAHLIA HTS EL	C	CAROL SHIMIZU	Marva Puerto	Marlene Cienfuegos	Toni Hodson	Monica Mora
1951301	DAYTON EEC	C	WILLIAM MASIS	Marva Puerto	Marlene Cienfuegos	Arthur Villanova	Monica Mora
1335601	DAYTON HEIGHTS EL	C	CAROL SHIMIZU	Marva Puerto	Marlene Cienfuegos	Toni Hodson	Monica Mora
1873803	DBM/ELTRON INFO MAG	C	WILLIAM MASIS	Marva Puerto	Marlene Cienfuegos	Arthur Villanova	Monica Mora
1238601	DEL OLMO EL	C	CAROL SHIMIZU	Marva Puerto	Marlene Cienfuegos	Toni Hodson	Monica Mora
1339701	DELEVAN DRIVE EL	C	CAROL SHIMIZU	Marva Puerto	Marlene Cienfuegos	Toni Hodson	Monica Mora
1347901	DORRIS PLACE EL	C	CAROL SHIMIZU	Marva Puerto	Marlene Cienfuegos	Toni Hodson	Monica Mora
1873801	DOWNTWN BUSINESS MAG	C	WILLIAM MASIS	Marva Puerto	Marlene Cienfuegos	Arthur Villanova	Monica Mora
1350703	EAGLE RCK G/HA EL MG	C	CAROL SHIMIZU	Marva Puerto	Marlene Cienfuegos	Toni Hodson	Monica Mora
1861402	EAGLE RCK G/HG/HA MG	C	CAROL SHIMIZU	Marva Puerto	Marlene Cienfuegos	Toni Hodson	Monica Mora
1350701	EAGLE ROCK EL	C	CAROL SHIMIZU	Marva Puerto	Marlene Cienfuegos	Toni Hodson	Monica Mora
1350702	EAGLE ROCK HG EL MAG	C	CAROL SHIMIZU	Marva Puerto	Marlene Cienfuegos	Toni Hodson	Monica Mora
1861401	EAGLE ROCK HS	C	CAROL SHIMIZU	Marva Puerto	Marlene Cienfuegos	Toni Hodson	Monica Mora
1871001	EARLY COLLEGE ACAD	C	CAROL SHIMIZU	Marva Puerto	Marlene Cienfuegos	Toni Hodson	Monica Mora
1357501	ELYSIAN HEIGHTS EL	C	CAROL SHIMIZU	Marva Puerto	Marlene Cienfuegos	Toni Hodson	Monica Mora
1238301	ESPERANZA EL	C	WILLIAM MASIS	Marva Puerto	Marlene Cienfuegos	Arthur Villanova	Monica Mora
1944101	ESTRELLA EEC	C	WILLIAM MASIS	Marva Puerto	Marlene Cienfuegos	Arthur Villanova	Monica Mora
1294201	ESTRELLA EL	C	WILLIAM MASIS	Marva Puerto	Marlene Cienfuegos	Arthur Villanova	Monica Mora
1387701	FLETCHER DR EL	C	WILLIAM MASIS	Marva Puerto	Marlene Cienfuegos	Arthur Villanova	Monica Mora
1813201	FOSHAY LC	C	WILLIAM MASIS	Marva Puerto	Marlene Cienfuegos	Arthur Villanova	Monica Mora
1398601	FRANKLIN EL	C	CAROL SHIMIZU	Marva Puerto	Marlene Cienfuegos	Toni Hodson	Monica Mora
1864302	FRANKLIN MATH/SCI MG	C	CAROL SHIMIZU	Marva Puerto	Marlene Cienfuegos	Toni Hodson	Monica Mora
1864301	FRANKLIN SH	C	CAROL SHIMIZU	Marva Puerto	Marlene Cienfuegos	Toni Hodson	Monica Mora
1408201	GARVANZA EL	C	CAROL SHIMIZU	Marva Puerto	Marlene Cienfuegos	Toni Hodson	Monica Mora
1945701	GLASSELL PARK EEC	C	CAROL SHIMIZU	Marva Puerto	Marlene Cienfuegos	Toni Hodson	Monica Mora
1412301	GLASSELL PARK EL	C	CAROL SHIMIZU	Marva Puerto	Marlene Cienfuegos	Toni Hodson	Monica Mora
1951701	GLENFELIZ BLVD EEC	C	CAROL SHIMIZU	Marva Puerto	Marlene Cienfuegos	Toni Hodson	Monica Mora

**LOS ANGELES UNIFIED SCHOOL DISTRICT**  
**HUMAN RESOURCES**  
**CERTIFICATED ASSIGNMENTS AND SUPPORT SERVICES**  
**Lists of Schools/Specialists**

<b>Cost Center</b>	<b>School Name</b>	<b>2017-2018 District (School Information Branch)</b>	<b>Specialist Name</b>	<b>SCA's</b>	<b>Techs</b>	<b>Credentials &amp; Contract Specialist</b>	<b>Immediate Supervisor to Credentials &amp; Contract Specialist</b>
1416401	GLENFELIZ BLVD EL	C	CAROL SHIMIZU	Marva Puerto	Marlene Cienfuegos	Toni Hodson	Monica Mora
1944301	GRATTS EEC	C	CAROL SHIMIZU	Marva Puerto	Marlene Cienfuegos	Toni Hodson	Monica Mora
1238501	GRATTS LA FOR YS	C	CAROL SHIMIZU	Marva Puerto	Marlene Cienfuegos	Toni Hodson	Monica Mora
1468101	HARMONY EL	C	WILLIAM MASIS	Marva Puerto	Marlene Cienfuegos	Arthur Villanova	Monica Mora
1864501	HIGHLAND PARK HS	C	CAROL SHIMIZU	Marva Puerto	Marlene Cienfuegos	Toni Hodson	Monica Mora
1958301	HOBART BLVD EEC	C	WILLIAM MASIS	Marva Puerto	Marlene Cienfuegos	Arthur Villanova	Monica Mora
1454801	HOBART BLVD EL	C	WILLIAM MASIS	Marva Puerto	Marlene Cienfuegos	Arthur Villanova	Monica Mora
1952501	HOOPER AVE EEC	C	WILLIAM MASIS	Marva Puerto	Marlene Cienfuegos	Arthur Villanova	Monica Mora
1457501	HOOPER EL	C	WILLIAM MASIS	Marva Puerto	Marlene Cienfuegos	Arthur Villanova	Monica Mora
1457601	HOOPER PC	C	WILLIAM MASIS	Marva Puerto	Marlene Cienfuegos	Arthur Villanova	Monica Mora
1458901	HOOVER EL	C	WILLIAM MASIS	Marva Puerto	Marlene Cienfuegos	Arthur Villanova	Monica Mora
1294401	HUERTA EL	C (INV)	WILLIAM MASIS	Deserine Estrada	Marlene Cienfuegos	Toni Hodson	Monica Mora
1818901	IRVING MME MAG	C	CAROL SHIMIZU	Marva Puerto	Marlene Cienfuegos	Toni Hodson	Monica Mora
1467101	IVANHOE EL	C	CAROL SHIMIZU	Marva Puerto	Marlene Cienfuegos	Toni Hodson	Monica Mora
1871401	JEFFERSON SH	C (INV)	WILLIAM MASIS	Deserine Estrada	Marlene Cienfuegos	Arthur Villanova	Monica Mora
1294301	JONES EL	C	WILLIAM MASIS	Marva Puerto	Marlene Cienfuegos	Arthur Villanova	Monica Mora
1511201	JONES PC	C	WILLIAM MASIS	Marva Puerto	Marlene Cienfuegos	Arthur Villanova	Monica Mora
1877701	KAHLO HS	C	CAROL SHIMIZU	Marva Puerto	Marlene Cienfuegos	Toni Hodson	Monica Mora
1806401	KIM ACADEMY	C	WILLIAM MASIS	Marva Puerto	Marlene Cienfuegos	Arthur Villanova	Monica Mora
1270101	KIM EL	C	CAROL SHIMIZU	Marva Puerto	Marlene Cienfuegos	Toni Hodson	Monica Mora
1820801	KING FILM/MEDIA MAG	C	WILLIAM MASIS	Marva Puerto	Marlene Cienfuegos	Arthur Villanova	Monica Mora
1653401	KING JR EL	C	WILLIAM MASIS	Marva Puerto	Marlene Cienfuegos	Arthur Villanova	Monica Mora
1820803	KING MS ENV STD MAG	C	WILLIAM MASIS	Marva Puerto	Marlene Cienfuegos	Arthur Villanova	Monica Mora
1820802	KING MS G/HG/HI ACH	C	WILLIAM MASIS	Marva Puerto	Marlene Cienfuegos	Arthur Villanova	Monica Mora
1254301	LAFAYETTE PARK PC	C	CAROL SHIMIZU	Marva Puerto	Sue Lau	Toni Hodson	Monica Mora
1239301	LAKE ST PRIMARY	C	CAROL SHIMIZU	Marva Puerto	Sue Lau	Toni Hodson	Monica Mora
1191901	LANTERMAN HS	C	WILLIAM MASIS	Marva Puerto	Sue Lau	Arthur Villanova	Monica Mora
1713702	LAUSD/USC CA ENG MAG	C	WILLIAM MASIS	Marva Puerto	Sue Lau	Arthur Villanova	Monica Mora
1230701	LEE MED HLTH MAG	C	CAROL SHIMIZU	Marva Puerto	Sue Lau	Toni Hodson	Monica Mora
1517001	LEXINGTON AVE PC	C	WILLIAM MASIS	Marva Puerto	Sue Lau	Arthur Villanova	Monica Mora
1805801	LIECHTY MS	C (INV)	WILLIAM MASIS	Deserine Estrada	Sue Lau	Toni Hodson	Monica Mora
1468001	LIZARRAGA EL	C	WILLIAM MASIS	Marva Puerto	Sue Lau	Arthur Villanova	Monica Mora
1489001	LOCKWOOD EL	C	WILLIAM MASIS	Marva Puerto	Sue Lau	Arthur Villanova	Monica Mora
1490401	LOGAN EL	C	CAROL SHIMIZU	Marva Puerto	Sue Lau	Toni Hodson	Monica Mora
1953201	LOGAN ST EEC	C	CAROL SHIMIZU	Marva Puerto	Sue Lau	Toni Hodson	Monica Mora
1820001	LOS ANGELES ACAD MS	C (INV)	WILLIAM MASIS	Deserine Estrada	Sue Lau	Arthur Villanova	Monica Mora
1820002	LOS ANGELES ACAD STEAM	C	WILLIAM MASIS	Deserine Estrada	Sue Lau	Arthur Villanova	Monica Mora
1498201	LOS ANGELES EL	C	CAROL SHIMIZU	Marva Puerto	Sue Lau	Toni Hodson	Monica Mora
1498601	LOS FELIZ STEMM MAG	C	CAROL SHIMIZU	Marva Puerto	Sue Lau	Toni Hodson	Monica Mora

**LOS ANGELES UNIFIED SCHOOL DISTRICT**  
**HUMAN RESOURCES**  
**CERTIFICATED ASSIGNMENTS AND SUPPORT SERVICES**  
**Lists of Schools/Specialists**

<b>Cost Center</b>	<b>School Name</b>	<b>2017-2018 District (School Information Branch)</b>	<b>Specialist Name</b>	<b>SCA's</b>	<b>Techs</b>	<b>Credentials &amp; Contract Specialist</b>	<b>Immediate Supervisor to Credentials &amp; Contract Specialist</b>
1254401	MACARTHUR PARK VPA	C	CAROL SHIMIZU	Marva Puerto	Sue Lau	Toni Hodson	Monica Mora
1511301	MACK EL	C	WILLIAM MASIS	Marva Puerto	Sue Lau	Arthur Villanova	Monica Mora
1505501	MAGNOLIA EL	C	CAROL SHIMIZU	Marva Puerto	Sue Lau	Toni Hodson	Monica Mora
1506801	MAIN ST EL	C	WILLIAM MASIS	Marva Puerto	Sue Lau	Arthur Villanova	Monica Mora
1874302	MANUAL ARTS COL PREP	C (INV)	WILLIAM MASIS	Deserine Estrada	Sue Lau	Arthur Villanova	Monica Mora
1874301	MANUAL ARTS SH	C (INV)	WILLIAM MASIS	Deserine Estrada	Sue Lau	Arthur Villanova	Monica Mora
1722001	MAPLE PC	C	WILLIAM MASIS	Marva Puerto	Sue Lau	Arthur Villanova	Monica Mora
1498301	MARIPOSA-NABI PC	C	WILLIAM MASIS	Marva Puerto	Sue Lau	Arthur Villanova	Monica Mora
1875002	MARSHALL HS G/HG/HA	C	CAROL SHIMIZU	Marva Puerto	Sue Lau	Toni Hodson	Monica Mora
1875001	MARSHALL SH	C	CAROL SHIMIZU	Marva Puerto	Sue Lau	Toni Hodson	Monica Mora
1520501	MAYBERRY EL	C	CAROL SHIMIZU	Marva Puerto	Sue Lau	Toni Hodson	Monica Mora
1191801	MC ALISTER HS CYESIS	C	WILLIAM MASIS	Marva Puerto	Sue Lau	Arthur Villanova	Monica Mora
1524701	MENLO EL	C	WILLIAM MASIS	Marva Puerto	Sue Lau	Arthur Villanova	Monica Mora
1953401	MERIDIAN EEC	C	CAROL SHIMIZU	Marva Puerto	Sue Lau	Arthur Villanova	Monica Mora
1528801	MICHELTORENA EL	C	CAROL SHIMIZU	Marva Puerto	Sue Lau	Toni Hodson	Monica Mora
1959001	MONTE VISTA EEC	C	CAROL SHIMIZU	Marva Puerto	Sue Lau	Toni Hodson	Monica Mora
1538401	MONTE VISTA EL	C	CAROL SHIMIZU	Marva Puerto	Sue Lau	Toni Hodson	Monica Mora
1541101	MT WASHINGTON EL	C	CAROL SHIMIZU	Marva Puerto	Sue Lau	Alicia Martinez	Monica Mora
1761401	NAVA COLL PREP ACAD	C	WILLIAM MASIS	Marva Puerto	Sue Lau	Arthur Villanova	Monica Mora
1517301	NAVA LA BUS&TECH SCH	C	WILLIAM MASIS	Marva Puerto	Sue Lau	Arthur Villanova	Monica Mora
1807001	NAVA LA SCH ART&CULT	C	WILLIAM MASIS	Marva Puerto	Sue Lau	Arthur Villanova	Monica Mora
1546601	NEVIN EL	C	WILLIAM MASIS	Marva Puerto	Sue Lau	Arthur Villanova	Monica Mora
1854501	NEWMARK HS	C	CAROL SHIMIZU	Marva Puerto	Sue Lau	Toni Hodson	Monica Mora
1954101	NORMANDIE AVE EEC	C	WILLIAM MASIS	Marva Puerto	Sue Lau	Arthur Villanova	Monica Mora
1563001	NORMANDIE EL	C	WILLIAM MASIS	Marva Puerto	Sue Lau	Arthur Villanova	Monica Mora
1569901	NORWOOD EL	C	WILLIAM MASIS	Marva Puerto	Sue Lau	Arthur Villanova	Monica Mora
1686801	OBAMA GLBL PREP ACAD	C (INV)	WILLIAM MASIS	Deserine Estrada	Sue Lau	Toni Hodson	Monica Mora
1239201	OLYMPIC PC	C	WILLIAM MASIS	Marva Puerto	Sue Lau	Arthur Villanova	Monica Mora
1885301	ORTHOPEAEDIC HOSP MAG	C	WILLIAM MASIS	Marva Puerto	Sue Lau	Arthur Villanova	Monica Mora
1324701	PLASENCIA EL	C	CAROL SHIMIZU	Marva Puerto	Sue Lau	Alicia Martinez	Monica Mora
1324702	PLASENCIA MTH/SC MAG	C	CAROL SHIMIZU	Marva Puerto	Sue Lau	Alicia Martinez	Monica Mora
1231101	POINDEXTER LAMOTTE EL	C	WILLIAM MASIS	Marva Puerto	Sue Lau	Arthur Villanova	Monica Mora
1238401	POLITI EL	C	WILLIAM MASIS	Marva Puerto	Sue Lau	Arthur Villanova	Monica Mora
1236901	RFK AMBSDR GLBL EDU	C	CAROL SHIMIZU	Marva Puerto	Sue Lau	Toni Hodson	Monica Mora
1777101	RFK AMBSDR GLBL LDSH	C	CAROL SHIMIZU	Marva Puerto	Sue Lau	Toni Hodson	Monica Mora
1850101	RFK LA SH ARTS	C	CAROL SHIMIZU	Marva Puerto	Sue Lau	Toni Hodson	Monica Mora
1778301	RFK NEW OPEN WLD	C (INV)	CAROL SHIMIZU	Marva Puerto	Sue Lau	Toni Hodson	Monica Mora
1820601	RFK SCH VIS ARTS/HUM	C	CAROL SHIMIZU	Marva Puerto	Sue Lau	Toni Hodson	Monica Mora
1778001	RFK UCLA COMM SCH	C	CAROL SHIMIZU	Marva Puerto	Sue Lau	Toni Hodson	Monica Mora

**LOS ANGELES UNIFIED SCHOOL DISTRICT**  
**HUMAN RESOURCES**  
**CERTIFICATED ASSIGNMENTS AND SUPPORT SERVICES**  
**Lists of Schools/Specialists**

<b>Cost Center</b>	<b>School Name</b>	<b>2017-2018 District (School Information Branch)</b>	<b>Specialist Name</b>	<b>SCA's</b>	<b>Techs</b>	<b>Credentials &amp; Contract Specialist</b>	<b>Immediate Supervisor to Credentials &amp; Contract Specialist</b>
1230801	RIDE EL SMART ACAD	C	WILLIAM MASIS	Marva Puerto	Sue Lau	Arthur Villanova	Monica Mora
1538501	RIORDAN PC	C	CAROL SHIMIZU	Marva Puerto	Sue Lau	Alicia Martinez	Monica Mora
1949701	ROBERTI EEC	C	CAROL SHIMIZU	Marva Puerto	Sue Lau	Arthur Villanova	Monica Mora
1632901	ROCKDALE VAPA MAG	C	CAROL SHIMIZU	Marva Puerto	Sue Lau	Toni Hodson	Monica Mora
1955301	ROSEMONT AVE EEC	C	CAROL SHIMIZU	Marva Puerto	Sue Lau	Alicia Martinez	Monica Mora
1637001	ROSEMONT EL	C	CAROL SHIMIZU	Marva Puerto	Sue Lau	Alicia Martinez	Monica Mora
1854401	ROYBAL LC	C (INV)	WILLIAM MASIS	Deserine Estrada	Sue Lau	Arthur Villanova	Monica Mora
1195501	SALVIN SP ED CTR	C	WILLIAM MASIS	Marva Puerto	Sue Lau	Arthur Villanova	Monica Mora
1649301	SAN PASCUAL EL	C	CAROL SHIMIZU	Marva Puerto	Sue Lau	Alicia Martinez	Monica Mora
1650701	SAN PEDRO EL	C	WILLIAM MASIS	Marva Puerto	Sue Lau	Arthur Villanova	Monica Mora
1871601	SANTEE EDUC COMPLEX	C (INV)	WILLIAM MASIS	Deserine Estrada	Sue Lau	Toni Hodson	Monica Mora
1770701	SOTOMAYOR LA HADA	C	CAROL SHIMIZU	Marva Puerto	Sue Lau	Toni Hodson	Monica Mora
1857701	SOTOMAYOR LA LARS	C	CAROL SHIMIZU	Marva Puerto	Sue Lau	Toni Hodson	Monica Mora
1213401	STUDIO SCHOOL	C	CAROL SHIMIZU	Marva Puerto	Sue Lau	Toni Hodson	Monica Mora
1717801	TOLAND WAY EL	C	CAROL SHIMIZU	Marva Puerto	Sue Lau	Alicia Martinez	Monica Mora
1956901	TRINITY EEC	C	WILLIAM MASIS	Marva Puerto	Sue Lau	Arthur Villanova	Monica Mora
1721901	TRINITY EL	C	WILLIAM MASIS	Marva Puerto	Sue Lau	Arthur Villanova	Monica Mora
1735601	UNION EL	C	CAROL SHIMIZU	Marva Puerto	Sue Lau	Alicia Martinez	Monica Mora
1747901	VERMONT EL	C	WILLIAM MASIS	Marva Puerto	Sue Lau	Arthur Villanova	Monica Mora
1846202	VIRGIL MED & HEALTH	C	CAROL SHIMIZU	Marva Puerto	Sue Lau	Toni Hodson	Monica Mora
1846201	VIRGIL MS	C	CAROL SHIMIZU	Marva Puerto	Sue Lau	Toni Hodson	Monica Mora
1957501	WADSWORTH AVE EEC	C	WILLIAM MASIS	Marva Puerto	Sue Lau	Arthur Villanova	Monica Mora
1758901	WADSWORTH EL	C	WILLIAM MASIS	Marva Puerto	Sue Lau	Arthur Villanova	Monica Mora
1715101	WEEMES EL	C	WILLIAM MASIS	Marva Puerto	Sue Lau	Arthur Villanova	Monica Mora
1874801	WEST ADAMS PREP SH	C (INV)	WILLIAM MASIS	Deserine Estrada	Sue Lau	Arthur Villanova	Monica Mora
1765401	WEST VERNON EL	C	WILLIAM MASIS	Marva Puerto	Sue Lau	Arthur Villanova	Monica Mora
1254201	WHITE EL	C	WILLIAM MASIS	Marva Puerto	Sue Lau	Arthur Villanova	Monica Mora
1191401	WIDNEY HS	C	CAROL SHIMIZU	Marva Puerto	Sue Lau	Toni Hodson	Monica Mora
1795901	YORKDALE EL	C	CAROL SHIMIZU	Marva Puerto	Sue Lau	Alicia Martinez	Monica Mora